



QUICK SET UP GUIDE

CONTROLS



For illustrative purposes only.

LOCATING THE iSTEAM®X, iTEMPO®, iTEMPO/PLUS® & AIRTEMPO® CONTROLS



Locate control (or Remote Temperature Sensor) where it will sense general room temperature and NOT direct steam emission from the steam head.

Controls installed inside the steam room must be located 4-5 feet above the floor on a vertical wall.

Locating any control outside of the steam room will require the installation of a Remote Temperature Sensor inside the steam room (see page 13).

CAUTION: TO AVOID UNINTENTIONAL STEAM BATH OPERATION, DO NOT LOCATE THE CONTROL WHERE OTHER CONTROLS, ACCESSORIES, SHOWER HEADS, VALVES, BODY SPRAYS OR SIMILAR WITHIN THE SHOWER COULD CAUSE CONFUSION OR INTERFERE WITH THE MRSTEAM CONTROL'S INTENDED USE AND FUNCTION.



iSTEAM®X



iTEMPO/PLUS®



AIRTEMPO®

⚠️WARNING The information in this guide is designed to provide a general overview of how MrSteam® products are installed. All images and diagrams are for illustrative purposes only and may have been altered for presentation purposes. NEVER use this document for the Installation, Operation or Maintenance of any MrSteam® product. For installation, operation and maintenance information and instructions, only use the applicable MrSteam® Installation, Operation & Maintenance Manual(s). The specific Installation, Operation & Maintenance manual that is supplied with each MrSteam® product contains important information required for the safe and reliable installation and operation of the product. Failure to install any MrSteam® product according to the applicable manual may result in property damage, an inoperable system/control, or hazardous condition. If you do not have the applicable Installation, Operation & Maintenance manual please contact MrSteam® for a free copy, or download a copy from www.mrsteam.com. If you have any questions about the installation, operation or maintenance of any MrSteam® product please contact a customer or technical service representative using the contact information on the back cover of this guide or consult a properly licensed contractor, architect and/or design professional.

STEAMHEAD INSTALLATION LOCATION

IMPORTANT NOTE: To avoid unintentional steam bath operation, do not locate the control where other controls, accessories, shower heads, valves, body sprays or similar within the shower could cause confusion or interfere with the MrSteam control's intended use and function.



GOOD



BAD



**DO NOT LOCATE THE
CONTROL ABOVE OR NEAR
THE STEAM HEAD OR DIRECT
STEAM EMISSIONS**

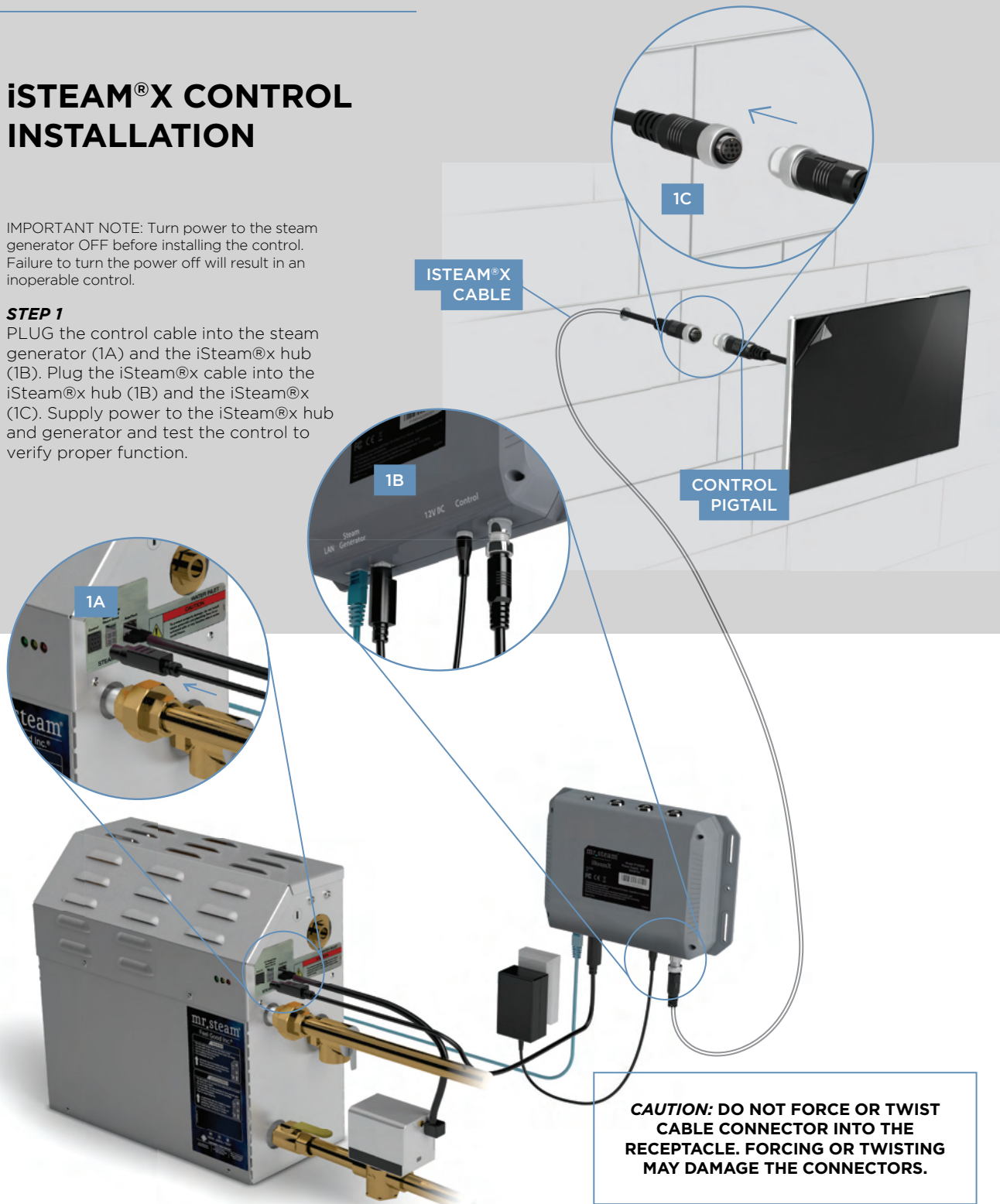
⚠️WARNING The information in this guide is designed to provide a general overview of how MrSteam® products are installed. All images and diagrams are for illustrative purposes only and may have been altered for presentation purposes. NEVER use this document for the Installation, Operation or Maintenance of any MrSteam® product. For installation, operation and maintenance information and instructions, only use the applicable MrSteam® Installation, Operation & Maintenance Manual(s). The specific Installation, Operation & Maintenance manual that is supplied with each MrSteam® product contains important information required for the safe and reliable installation and operation of the product. Failure to install any MrSteam® product according to the applicable manual may result in property damage, an inoperable system/control, or hazardous condition. If you do not have the applicable Installation, Operation & Maintenance manual please contact MrSteam® for a free copy, or download a copy from www.mrsteam.com. If you have any questions about the installation, operation or maintenance of any MrSteam® product please contact a customer or technical service representative using the contact information on the back cover of this guide or consult a properly licensed contractor, architect and/or design professional.

iSTEAM®X CONTROL INSTALLATION

IMPORTANT NOTE: Turn power to the steam generator OFF before installing the control. Failure to turn the power off will result in an inoperable control.

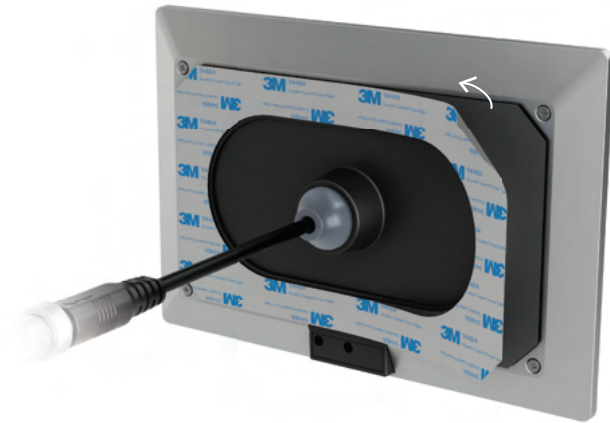
STEP 1

PLUG the control cable into the steam generator (1A) and the iSteam®x hub (1B). Plug the iSteam®x cable into the iSteam®x hub (1B) and the iSteam®x (1C). Supply power to the iSteam®x hub and generator and test the control to verify proper function.



⚠WARNING The information in this guide is designed to provide a general overview of how MrSteam® products are installed. All images and diagrams are for illustrative purposes only and may have been altered for presentation purposes. NEVER use this document for the Installation, Operation or Maintenance of any MrSteam® product. For installation, operation and maintenance information and instructions, only use the applicable MrSteam® Installation, Operation & Maintenance Manual(s). The specific Installation, Operation & Maintenance manual that is supplied with each MrSteam® product contains important information required for the safe and reliable installation and operation of the product. Failure to install any MrSteam® product according to the applicable manual may result in property damage, an inoperable system/control, or hazardous condition. If you do not have the applicable Installation, Operation & Maintenance manual please contact MrSteam® for a free copy, or download a copy from www.mrsteam.com. If you have any questions about the installation, operation or maintenance of any MrSteam® product please contact a customer or technical service representative using the contact information on the back cover of this guide or consult a properly licensed contractor, architect and/or design professional.

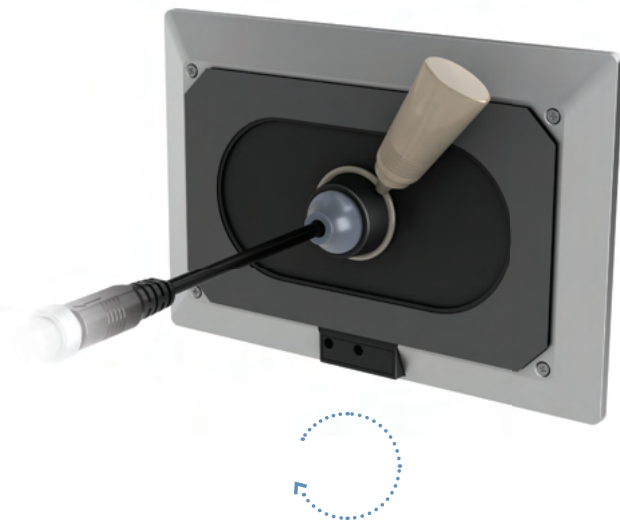
2A

**STEP 2**

Peel the adhesive film off the back of the iSteam control (2A). Apply a bead of silicone (provided) around the rear of the control as required to create a moisture seal (2B).

Ensure the control is level. Carefully feed the cable into the rough-in box and secure the control to the wall. Care must be taken to not pinch the cable.

2B



Remove and discard the peel off screen protector (2C).

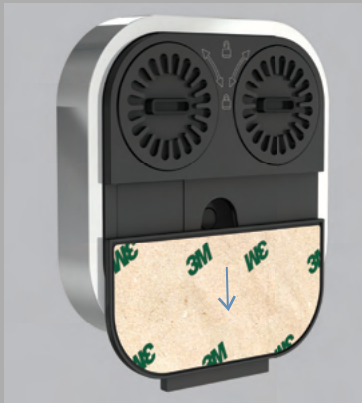
2C



⚠WARNING The information in this guide is designed to provide a general overview of how MrSteam® products are installed. All images and diagrams are for illustrative purposes only and may have been altered for presentation purposes. NEVER use this document for the Installation, Operation or Maintenance of any MrSteam® product. For installation, operation and maintenance information and instructions, only use the applicable MrSteam® Installation, Operation & Maintenance Manual(s). The specific Installation, Operation & Maintenance manual that is supplied with each MrSteam® product contains important information required for the safe and reliable installation and operation of the product. Failure to install any MrSteam® product according to the applicable manual may result in property damage, an inoperable system/control, or hazardous condition. If you do not have the applicable Installation, Operation & Maintenance manual please contact MrSteam® for a free copy, or download a copy from www.mrsteam.com. If you have any questions about the installation, operation or maintenance of any MrSteam® product please contact a customer or technical service representative using the contact information on the back cover of this guide or consult a properly licensed contractor, architect and/or design professional.

AIRTEMPO® SURFACE MOUNT INSTALLATION

A



B



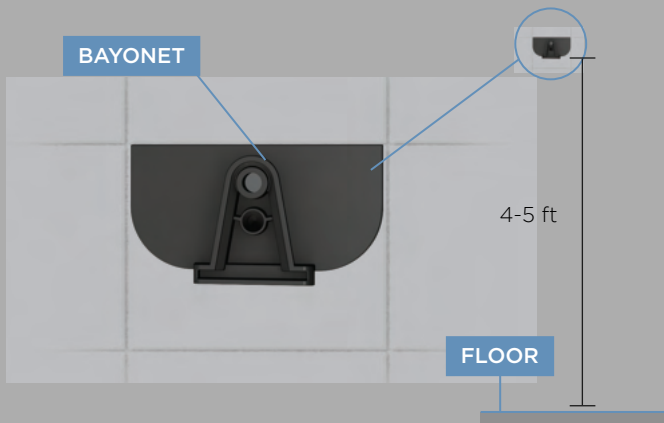
STEP 1

Determine the desired installation location of the control. The AirTempo controls are designed to be installed inside or outside the steam room as a matter of personal preference.

STEP 2

- Remove the surface mount bayonet from the back of the AirTempo Control (A).
- Remove and discard the release paper to expose the adhesive liner (B).

BAYONET



FLOOR

STEP 3

- Ensure the mounting surface is clean, flat/smooth, and dry.
- Place the bayonet on the wall in the desired location (on vertical wall 4-5 feet above the floor near the bather seating area).

STEP 4

- Wait 15 minutes before placing the control on the bayonet to ensure the adhesive is secured.

IMPORTANT NOTE: If the control is installed outside the steam room, a Remote Temperature Probe (part number MST5) must be installed inside the steam room. See Remote Temperature Sensor page 12.

Use the screw and anchor provided to secure the bayonet to the wall as required for rough or uneven wall surfaces. The surface mount bayonet supports the weight of the AirTempo® control.



⚠WARNING The information in this guide is designed to provide a general overview of how MrSteam® products are installed. All images and diagrams are for illustrative purposes only and may have been altered for presentation purposes. NEVER use this document for the Installation, Operation or Maintenance of any MrSteam® product. For installation, operation and maintenance information and instructions, only use the applicable MrSteam® Installation, Operation & Maintenance Manual(s). The specific Installation, Operation & Maintenance manual that is supplied with each MrSteam® product contains important information required for the safe and reliable installation and operation of the product. Failure to install any MrSteam® product according to the applicable manual may result in property damage, an inoperable system/control, or hazardous condition. If you do not have the applicable Installation, Operation & Maintenance manual please contact MrSteam® for a free copy, or download a copy from www.mrsteam.com. If you have any questions about the installation, operation or maintenance of any MrSteam® product please contact a customer or technical service representative using the contact information on the back cover of this guide or consult a properly licensed contractor, architect and/or design professional.



AIRTEMPO® WIRELESS RECEIVER INSTALLATION

The control can be located up to 60 feet from the wireless receiver. Construction materials may affect the communication between the control and the receiver. Test the range of the AirTempo®. It may be necessary to change the location of the wireless receiver to improve the range. Contact your local MrSteam® representative (<https://www.mrsteam.com/find-a-dealer>) for an optional 30 or 60 foot cable. Using the 3 foot cable provided, plug one end into the steam bath generator and the other end into the AirTempo® wireless receiver.

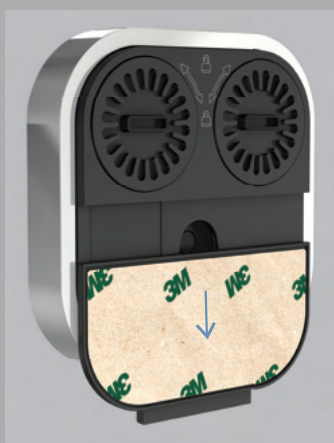


Attach the wireless receiver to a wall adjacent to the steam generator using the screw provided.

AIRTEMPO® FLUSH MOUNT INSTALLATION

STEP 1

Remove the surface mount bayonet from the back of the AirTempo® control. The surface mount bayonet is not used when flush mounting.



IMPORTANT NOTE: Flush mount components are sold separately (104232RD & 104232SQ). Contact a MrSteam® representative if a flush mount kit is needed.

⚠ WARNING The information in this guide is designed to provide a general overview of how MrSteam® products are installed. All images and diagrams are for illustrative purposes only and may have been altered for presentation purposes. NEVER use this document for the Installation, Operation or Maintenance of any MrSteam® product. For installation, operation and maintenance information and instructions, only use the applicable MrSteam® Installation, Operation & Maintenance Manual(s). The specific Installation, Operation & Maintenance manual that is supplied with each MrSteam® product contains important information required for the safe and reliable installation and operation of the product. Failure to install any MrSteam® product according to the applicable manual may result in property damage, an inoperable system/control, or hazardous condition. If you do not have the applicable Installation, Operation & Maintenance manual please contact MrSteam® for a free copy, or download a copy from www.mrsteam.com. If you have any questions about the installation, operation or maintenance of any MrSteam® product please contact a customer or technical service representative using the contact information on the back cover of this guide or consult a properly licensed contractor, architect and/or design professional.

**STEP 2**

Remove decorative bezel from AirTempo® control.

IMPORTANT NOTE: BE CAREFUL NOT TO DROP CONTROLLER WHEN RING POPS OFF

STEP 3

- Using the template provided, cut the hole in the desired location. Do not oversize or undersize the cutout. Ensure the template is level before cutting the hole.
- Test fit the flush mount box to ensure the hole is the correct size.
- Ensure the mounting surface is clean and dry.

STEP 4

Apply a bead of silicone (provided) around the rear of the control as required to create a moisture seal.

Remove and discard the release paper to expose the adhesive liner.

Press the flush mount box against the wall until the adhesive sticks and holds firmly.



⚠WARNING The information in this guide is designed to provide a general overview of how MrSteam® products are installed. All images and diagrams are for illustrative purposes only and may have been altered for presentation purposes. NEVER use this document for the Installation, Operation or Maintenance of any MrSteam® product. For installation, operation and maintenance information and instructions, only use the applicable MrSteam® Installation, Operation & Maintenance Manual(s). The specific Installation, Operation & Maintenance manual that is supplied with each MrSteam® product contains important information required for the safe and reliable installation and operation of the product. Failure to install any MrSteam® product according to the applicable manual may result in property damage, an inoperable system/control, or hazardous condition. If you do not have the applicable Installation, Operation & Maintenance manual please contact MrSteam® for a free copy, or download a copy from www.mrsteam.com. If you have any questions about the installation, operation or maintenance of any MrSteam® product please contact a customer or technical service representative using the contact information on the back cover of this guide or consult a properly licensed contractor, architect and/or design professional.

STEP 5

Place the electronic assembly into the decorative bezel as shown.

**STEP 6**

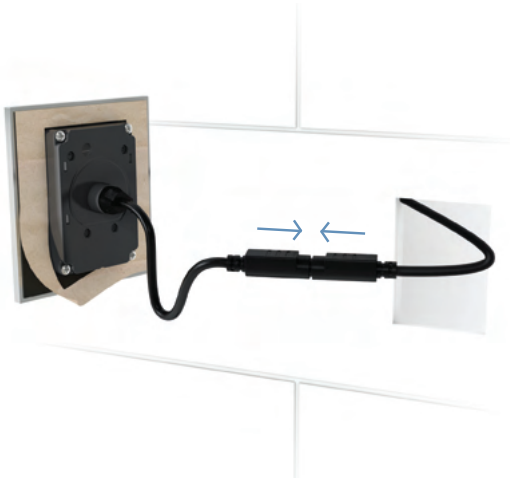
The retention ring snaps onto the assembly from behind. The 3 piece assembly can then be placed into the flush mount box.



⚠WARNING The information in this guide is designed to provide a general overview of how MrSteam® products are installed. All images and diagrams are for illustrative purposes only and may have been altered for presentation purposes. NEVER use this document for the Installation, Operation or Maintenance of any MrSteam® product. For installation, operation and maintenance information and instructions, only use the applicable MrSteam® Installation, Operation & Maintenance Manual(s). The specific Installation, Operation & Maintenance manual that is supplied with each MrSteam® product contains important information required for the safe and reliable installation and operation of the product. Failure to install any MrSteam® product according to the applicable manual may result in property damage, an inoperable system/control, or hazardous condition. If you do not have the applicable Installation, Operation & Maintenance manual please contact MrSteam® for a free copy, or download a copy from www.mrsteam.com. If you have any questions about the installation, operation or maintenance of any MrSteam® product please contact a customer or technical service representative using the contact information on the back cover of this guide or consult a properly licensed contractor, architect and/or design professional.

iTEMPO OR iTEMPO/PLUS CONTROL INSTALLATION

IMPORTANT NOTE: Turn power to the steam generator OFF before installing the control. Failure to turn the power off will result in an inoperable control.



STEP 1

Firmly connect the control cable to the control pigtail. Turn on power to the steam generator and test the control to verify correct connections. Test per instructions.

Disconnect control cable. Make a 2-5/8" wide by 3-7/8" high cutout in the desired control location.



STEP 2

Firmly connect control cable. Remove & discard peel-off paper to expose adhesive liner.

STEP 3

Apply a bead of silicone (provided) around the rear of the control as required to create a moisture seal.



STEP 4

Ensure the mounting surface is clean, flat/smooth, and dry as required for good adhesion. Hold the control with the LED display in the 12 o'clock position and press the control against the wall until the adhesive sticks and holds firmly as shown.

⚠WARNING The information in this guide is designed to provide a general overview of how MrSteam® products are installed. All images and diagrams are for illustrative purposes only and may have been altered for presentation purposes. NEVER use this document for the Installation, Operation or Maintenance of any MrSteam® product. For installation, operation and maintenance information and instructions, only use the applicable MrSteam® Installation, Operation & Maintenance Manual(s). The specific Installation, Operation & Maintenance manual that is supplied with each MrSteam® product contains important information required for the safe and reliable installation and operation of the product. Failure to install any MrSteam® product according to the applicable manual may result in property damage, an inoperable system/control, or hazardous condition. If you do not have the applicable Installation, Operation & Maintenance manual please contact MrSteam® for a free copy, or download a copy from www.mrsteam.com. If you have any questions about the installation, operation or maintenance of any MrSteam® product please contact a customer or technical service representative using the contact information on the back cover of this guide or consult a properly licensed contractor, architect and/or design professional.

REMOTE TEMPERATURE SENSOR (MSTS)

A Remote Temperature Sensor is required when the control is installed outside the steam room.

Locate the Remote Temperature Sensor where it will sense general room temperature and NOT direct steam emission from the steam head. Refer to the MrSteam Installation manual for additional control installation information.



For illustrative purposes only. Consult with qualified designer, architect or contractor for steamroom construction details.

4-5 ft

INSTALLING A REMOTE TEMPERATURE PROBE

STEP 1

The Probe must be installed:

- A.** On a vertical surface
- B.** 4-5 feet above the Floor
- C.** In a location representative of the desired steambathing temperatures. Do not locate the probe above or near the steam head or direct steam emissions. The probe has an integral 30 or 60 ft. cable. Ensure that the probe and control are located accordingly.

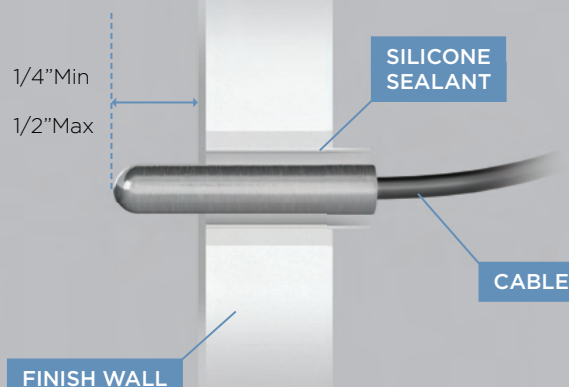
STEP 2

Drill a 5/16 inch hole in the wall. Do not oversize or undersize the hole. Clean area thoroughly.

STEP 3

Route the end of the temperature probe cable with the temperature probe through a conduit inside the wall cavity as shown in Figure 1.

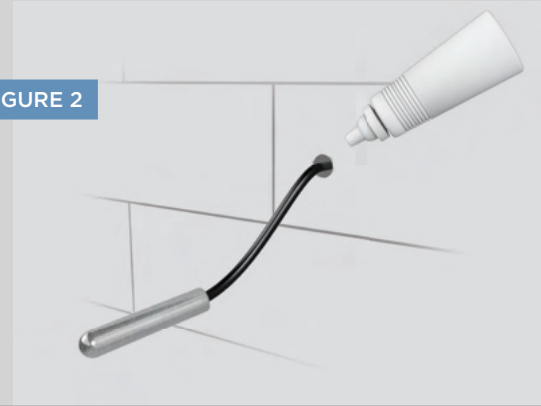
FIGURE 1



⚠️WARNING The information in this guide is designed to provide a general overview of how MrSteam® products are installed. All images and diagrams are for illustrative purposes only and may have been altered for presentation purposes. NEVER use this document for the Installation, Operation or Maintenance of any MrSteam® product. For installation, operation and maintenance information and instructions, only use the applicable MrSteam® Installation, Operation & Maintenance Manual(s). The specific Installation, Operation & Maintenance manual that is supplied with each MrSteam® product contains important information required for the safe and reliable installation and operation of the product. Failure to install any MrSteam® product according to the applicable manual may result in property damage, an inoperable system/control, or hazardous condition. If you do not have the applicable Installation, Operation & Maintenance manual please contact MrSteam® for a free copy, or download a copy from www.mrsteam.com. If you have any questions about the installation, operation or maintenance of any MrSteam® product please contact a customer or technical service representative using the contact information on the back cover of this guide or consult a properly licensed contractor, architect and/or design professional.

STEP 4

With a minimal length of the cable exposed, apply silicone (provided) to the hole in the wall as required to create a moisture seal as shown in Figure 2.

FIGURE 2**STEP 5**

Push the Remote Temperature Probe into hole as required to leave between 1/4" - 1/2" of the probe. Exposed as shown in Figure 3.

STEP 6

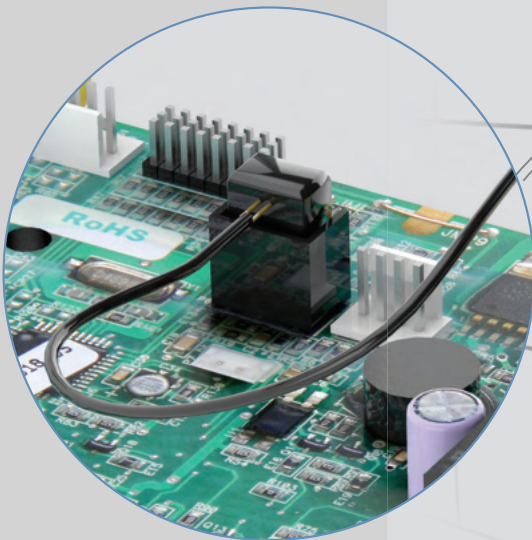
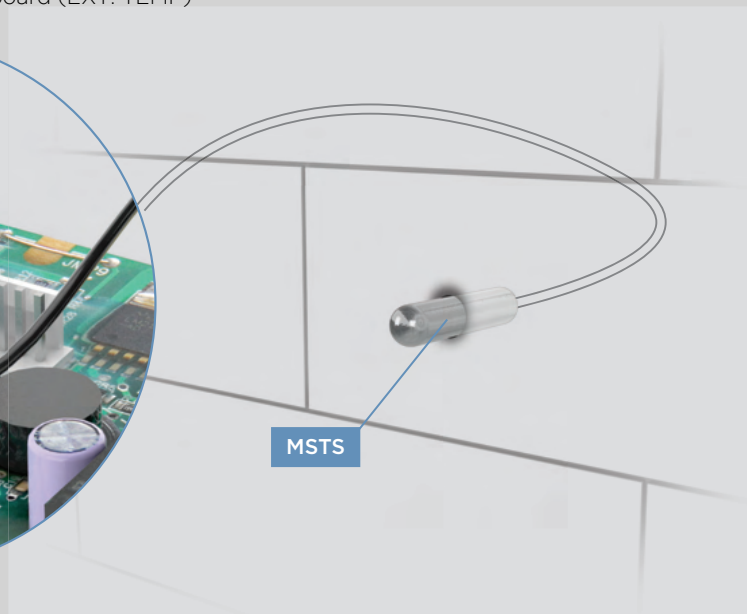
Ensure a minimum of 1/4" of the probe is exposed to the air. Failure to do so may result in an inoperative control and a hazardous condition. The exposed area of the probe must be free of silicone or any materials that prevent direct exposure to the steam room air. Failure to do so may interfere with the ability to sense temperature and may result in excessive steam room temperatures.

FIGURE 3**INSTALLED
PROBE**

**IMPORTANT NOTE: DO NOT STRAIN,
STAPLE, PINCH OR OTHERWISE
DAMAGE THE PROBE CABLE.**

STEP 7

Plug MSTs into location shown on PC board (EXT. TEMP)

**MSTS**

⚠WARNING The information in this guide is designed to provide a general overview of how MrSteam® products are installed. All images and diagrams are for illustrative purposes only and may have been altered for presentation purposes. NEVER use this document for the Installation, Operation or Maintenance of any MrSteam® product. For installation, operation and maintenance information and instructions, only use the applicable MrSteam® Installation, Operation & Maintenance Manual(s). The specific Installation, Operation & Maintenance manual that is supplied with each MrSteam® product contains important information required for the safe and reliable installation and operation of the product. Failure to install any MrSteam® product according to the applicable manual may result in property damage, an inoperable system/control, or hazardous condition. If you do not have the applicable Installation, Operation & Maintenance manual please contact MrSteam® for a free copy, or download a copy from www.mrsteam.com. If you have any questions about the installation, operation or maintenance of any MrSteam® product please contact a customer or technical service representative using the contact information on the back cover of this guide or consult a properly licensed contractor, architect and/or design professional.

CONNECTING THE CONTROL CABLE TO THE STEAM GENERATOR

Route the control cable (provided with the control) from the wall cutout to the steam generator. When installing iTempo or iTempo Plus route the control cable (provided with the control) from the wall cut out to the steam generator. If installing an iSteamX the control cable is routed from the iSteam®X Hub to the steam generator and the iSteam®X control cable get routed from the wall cut out to the iSteam®X Hub.

The 30' (and optional 60') control cable features identical Mini-Din connectors at both ends.

IMPORTANT NOTE: The standard length of the cable for connecting the control to the steam generator is 30 feet. The steam generator and control must be located accordingly. Contact a MrSteam® representative (<https://www.mrsteam.com/find-a-dealer>) to purchase an optional 60 ft. cable (PN 103990-60) for iTempo® controls. A 60 foot cable is available for use with iSteam®x controls (PN 104117-60).



IMPORTANT NOTE: The standard length of the cable for connecting the control to the steam generator is 30 feet.

IMPORTANT NOTE: DO NOT STRAIN, STAPLE, PINCH OR OTHERWISE DAMAGE THE CONTROL CABLE. ROUTE CABLE AS REQUIRED TO PERMIT REPLACEMENT.

⚠WARNING The information in this guide is designed to provide a general overview of how MrSteam® products are installed. All images and diagrams are for illustrative purposes only and may have been altered for presentation purposes. NEVER use this document for the Installation, Operation or Maintenance of any MrSteam® product. For installation, operation and maintenance information and instructions, only use the applicable MrSteam® Installation, Operation & Maintenance Manual(s). The specific Installation, Operation & Maintenance manual that is supplied with each MrSteam® product contains important information required for the safe and reliable installation and operation of the product. Failure to install any MrSteam® product according to the applicable manual may result in property damage, an inoperable system/control, or hazardous condition. If you do not have the applicable Installation, Operation & Maintenance manual please contact MrSteam® for a free copy, or download a copy from www.mrsteam.com. If you have any questions about the installation, operation or maintenance of any MrSteam® product please contact a customer or technical service representative using the contact information on the back cover of this guide or consult a properly licensed contractor, architect and/or design professional.

A leader and innovator in residential and commercial steam shower systems, spa products and experiences.

CONTACT US

HEADQUARTERS
MrSteam Corporation®
43-20 34th Street
Long Island City, NY. 11101 USA
tel 1-800-76 STEAM (767-8326)

WEST COAST
MrSteam Corporation®
9410 South La Cienega Blvd
Los Angeles, CA. 90301 USA
tel 1-800-72 STEAM (727-8326)

Or write to us at hello@mrsteam.com

Mr. Steam, Mr. Steam and des., AirTempo, A Lifetime of Pleasure, AromaFlo, AutoFLUSH, Audio@Home, AutoSteam, Broadway Collection, Butler Package, ChromaSound Spa Package, ChromeSteamX, Clean Steam...Every Time, Club Therapy, Day Spa, Digital 1, Express Steam, Etempo, Etempo/Plus, Etempo/Start, Feel Good Inc., Fifth Avenue Collection, From Bathroom to Spa, HomeWizard, iButler, iDream Package, iGenie, iSpa Package, iSteamX, iTempo, iTempo/Plus, Linear, Linear Steamhead, Making Wellness a Way of Life, Metro Collection, Mrsauna, MusicTherapy, MySteam, Spa Package, Steam on Demand, Steam@Home, SmartSizing, Steam in a Box, SteamStart, SteamStop, SteamTherapy, Sussman, Tempo, Tala, The Intelligent Steam Bath, Virtual Spa System, and Warmatowel are registered trademarks of MrSteam Corporation.

HomeWizard is a trademark of MrSteam Corporation.

* Please refer to the applicable MrSteam Installation, Operation & Maintenance Manual, at mrsteam.com, for installation, operation and maintenance information and instructions. Failure to do so may result in property damage or an inoperable or hazardous condition. For safety and convenience, consult a qualified contractor, architect and/or design professional.

See product packaging and labeling for important information.

Copyright 2023 MrSteam Corporation. All rights reserved.

PUR100537, Revision 02/2023

mr.steam®



www.mrsteam.com