

Digital 30-Minute Timer

Electronic Interval Timer for MrSteam CU Commercial Steambaths
Installation and Operating Manual


FUNCTIONALITY OF THE TIMESWITCH


During the preset running time, the timer energizes and activates the connected steam solenoid by closing a circuit. After the time has elapsed, the timer deenergizes and deactivates the connected steam solenoid by opening the circuit again. **THE TIMER MAY ONLY BE OPERATED AFTER INSTALLATION IN A PROTECTIVE HOUSING.**


BEFORE USE

Before installing and using this timer, it is absolutely necessary that you read this operating manual thoroughly.

This timer may only be installed by a qualified, licensed electrician and must be installed in accordance with National and local codes.


 **WARNING SHOCK HAZARD!** Install the timer per these instructions before connecting to the main supply. Never touch live contacts or components.


 **WARNING** Protection from contact with the line voltage components must be achieved by proper installation in a 2 x 4 junction box. When installing the timer, ensure the fastening sliders prevent the timer from being removed.

 **WARNING DO NOT** install the timer in a wet or damp location.

 **WARNING DO NOT** install the timer inside the steam room.

IMPORTANT NOTE: As you follow these instructions, you will notice warning and caution symbols. This information is important for the safe and efficient installation and operation of this generator. These are types of potential hazards that may occur during this installation and operation:

 **CAUTION** states a hazard may cause serious injury or death if precautions are not followed.

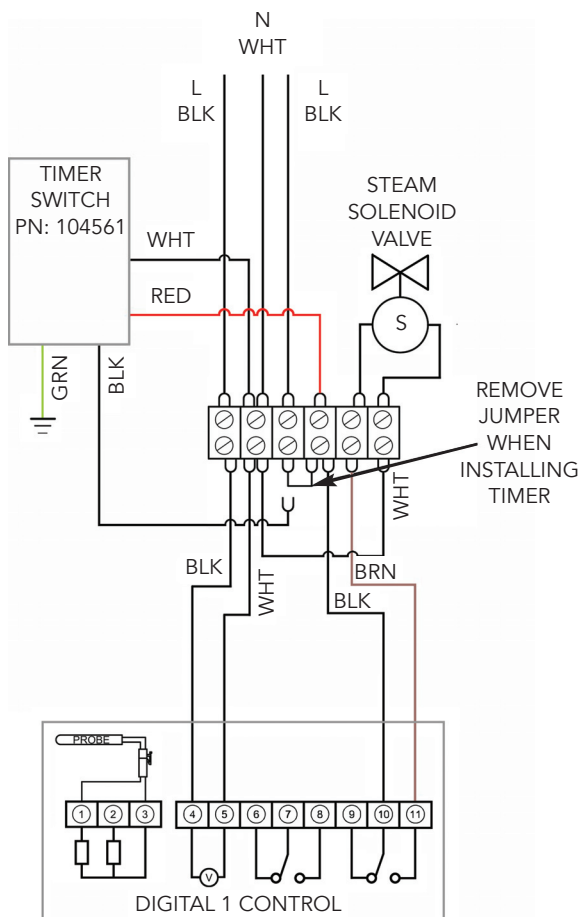
 **WARNING** signals a situation where minor injury or product damage may occur if you do not follow instructions.

1. CONNECTING THE TIMER

If CU serial number is before CXA1247817, see section 3.

1. Remove one of the knockout holes on the left side of the boiler jacket.
2. Remove the room timer jumper from the terminal block.
3. Connect the timer to the terminal block as shown on the wiring diagram Figure 1.
4. Mount the timer plate assembly on a 4 x 2 Electrical box (not supplied).

Figure 1: Wiring Diagram

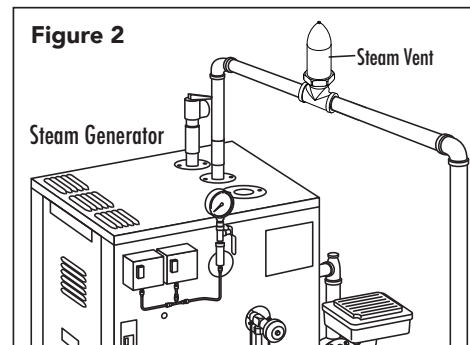


2. STEAM VENT

IMPORTANT: A steam vent (PN 104072) must be installed in the steam line between the steam generator and the steam solenoid valve when using a 30 minute timer as shown. The steam vent will release hydrostatic pressure in the boiler while filling when the 30 minute timer has timed out.

WARNING Make sure the boiler and pipes are not hot and have no pressure before installing the steam vent.

1. The steam vent shall be plumbed into a Tee in the steam line between the boiler and the solenoid valve. Only one steam vent is required, even if the boiler services two rooms.
2. **IMPORTANT NOTE:** The steam vent should remain accessible for service.
3. The steam vent should be oriented vertically, with the threads down, as shown in Figure 2.
4. The steam vent is provided with 3/4" NPT male and 1/2" NPT female thread for connecting to the steam line.



SETTING A RUNNING TIME

Using the button, you can set the desired running time during which the steam generator will operate. The steam solenoid connected to the timer is switched on. As the timer counts down, the corresponding light will illuminate indicating the amount of time left.

END OF RUNNING TIME

After the preset running time has elapsed, the timer switches the connected steam solenoid off. The red light indicating the steam is off will be illuminated.

3. CONNECTING THE TIMER FOR CU COMMERCIAL STEAMBATHS BEFORE SERIAL NUMBER CXA1247817

In the event that you are installing the timer to a CU that has a serial number CXA1247817 or before, some wiring changes need to be made at the terminal block. Please see the diagram in section 1 for how it should look after completing these steps.

1. The brown wire on the bottom moves from the 4th terminal from the left to the 5th.
2. The black wire on the bottom moves from the 3rd terminal from the left to the 4th.
3. The metal jumper moves from between the 4th and 5th terminal from the left on the top to between the 3rd and 4th on the bottom.

Figure 3: Old Wiring Diagram

